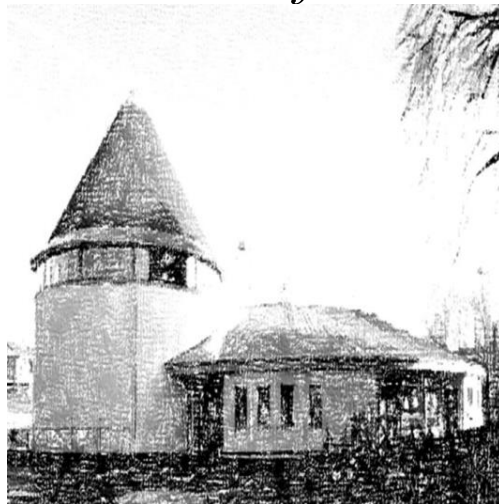




# Priory Church In Wales (Aided) Primary School

*'Celebrating Creativity, Imagination and  
Belief'*



## Anti-Bullying Policy

Previously adopted by Headteacher and Governing Body on 17.01.22

Date 23/01/2023 (to be reviewed in Spring Term 1 (2024-2025))

Signed Acting Headteacher (Miss Claire Pugh)

Signed Chair of Governors (Cllr Matthew Dorrance)

# BULLYING

*“Bullying is deliberate harassment or an aggressive act which causes hurt to another. The hurt can be physical or psychological; inflicted by one child or a group”.*

Bullying covers a wide range of behaviour from teasing to, in more serious cases, inflicting serious physical harm. It includes:

- being hit, kicked, pinched, spat at or threatened
- being called names
- making a fool of someone
- teasing or sending nasty notes
- spreading rumours and malicious gossip about someone
- repeatedly excluding a child by not talking to them or not letting them join in
- deliberately destroying another child’s property
- locking someone in a room

The most common type of bullying is being picked on, followed by teasing, then hitting or kicking and, less frequently, extortion.

## AIMS

Priory Church In Wales (Aided) School seeks to provide a caring and Christian environment in which pupils are supported in an educational environment that enables our learners to develop towards the four purposes of the new curriculum in Wales—the starting point and aspiration for every child and young person in Wales. To be ambitious, capable learners, ready to learn throughout their lives; enterprising, creative contributors, ready to play a full part in life and work; ethical, informed citizens of Wales and the world; healthy, confident individuals, ready to lead fulfilling lives as valued members of society

If we are to achieve our aims of developing young learners with the four purposes at the heart of everything we do, it is vital that children are provided with a safe and caring environment in which they feel able to express their concerns and where bullying is openly and consistently addressed.

## **POLICY OBJECTIVES**

- It is essential that all concerned fully understand what is meant by bullying.
- Children who are being bullied understand that they are not to blame and must tell an adult, parent, teacher, assistant or mid-day supervisor.
- Create an environment in which there is a mechanism for preventing bullying and dealing with it swiftly when it occurs.
- Ensure the whole school community are following the Relationship and Sexuality Education policy.
- Through curriculum design for example, philosophy for children sessions encourage questions that covers all diverse areas within community/ society to generate discussion to provide inclusivity for all.

## **SCHOOL GUIDELINES**

- Through curriculum work, assemblies and discussions, where appropriate, we establish that bullying is unacceptable, both inside and outside school.
- Teachers/Assistants/Mid-day Supervisors will take bullying seriously by:
  - looking for early signs of distress
  - listening carefully and noting incident
  - offering immediate support
  - making it clear to the bully that the behaviour is unacceptable
  - assistant and mid-day supervisors bring any incidents to the attention of the class teacher
  - the class teacher refers problems (which cannot be dealt with in a class situation) either to the attention of the Acting Deputy Head or the Headteacher.
  - In the cases of repeated bullying incidents staff record the incidents on MYCONCERN for a chronological record of what has happened and what has been done to support the situation is recorded

- in cases of prolonged or serious bullying incidents the Headteacher informs the parents that the behaviour is unacceptable
- Children who are being bullied will be encouraged **to tell** and members of staff will listen.
- All members of staff will be consistent in the way they deal with bullying:
  - being firm but not aggressive where physical restraint is necessary
  - making it clear to the bully that their behaviour will not be tolerated
  - offering the victim support
  - responding to the incident in a structured way i.e. through classroom projects, discussions or assemblies
  - informing parents of action taken or intended action
- Cases of bullying should be seen as serious breaches of the school's code of conduct.
- Pupils and parents will be informed of the school's approach to bullying and to the school's Anti-Bullying Policy.
- Listen to and recognise the importance of children's views on bullying.
- Record events of bullying on MYCONCERN
- Address the issues linked to bullying through positive class discussion or Philosophy for Children sessions

## **LUNCH-TIME**

Lunch times are when most bullying could occur. We therefore ensure that:-

- All pupils are in an area where they can easily be observed and supervised. It is, therefore, essential that all children are outside together or during wet weather that they all remain within their classroom with appropriate activities to be involved in.
- That mid-day supervisors take any sign of bullying seriously and report any signs or knowledge of bullying to the class teacher.

- All staff including mid-day supervisors clearly understand their responsibilities and how it is to be implemented.